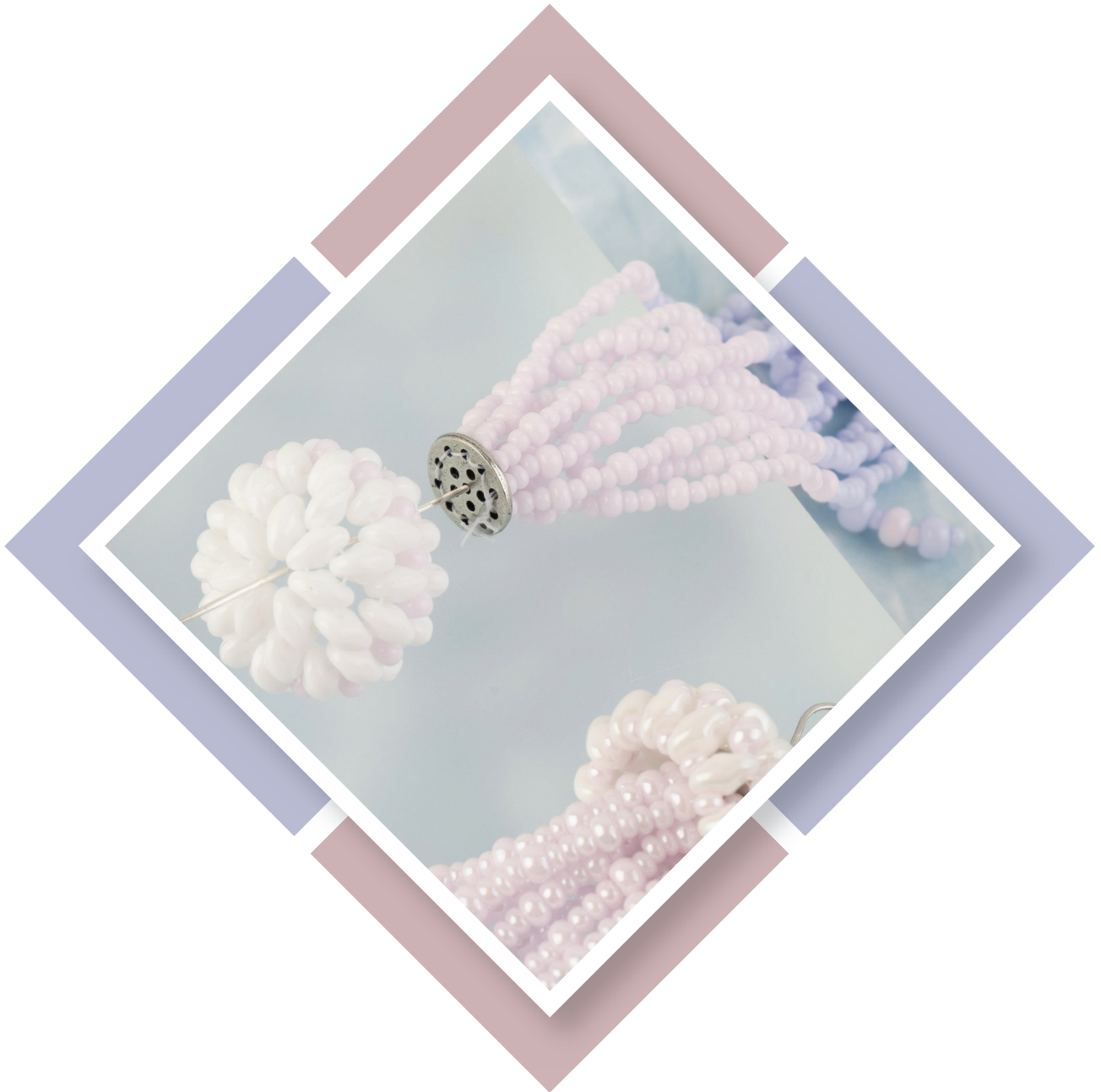


Inspiration

John Bead
ESTABLISHED 1954

FRINGE DISC JELLY FISH



In this project we will create caps for our Jelly Fish using John Bead Czech 2-HoleSuperDuo Beads and Czech Preciosa Naturals! Finish them with the new, Fringe Discs! Make a Big and Baby Jelly, or a Belle Cap. See Step 3 for each variation.

Size 11/0, 8/0, and 6/0 Seed Beads:

Big Jellies:

Preciosa Naturals

Size 11/0 Opaque Natural Lilac Luster 63210010-128

Size 11/0 Opaque Natural Pink Luster 63210010-127

Size 8/0 Opaque Natural Pink Luster 63210008-027

Size 6/0 Opaque Natural Lilac Luster 63210006-113

Size 6/0 Opaque Natural Pink Luster 63210006-112

Size 11/0 Opaque Natural Lilac 66401506V

Size 11/0 Opaque Natural Pink 63210010-125

Size 8/0 Opaque Natural Pink 63210008-025

Size 6/0 Opaque Natural Lilac 63210006-111

Size 6/0 Opaque Natural Pink 63210006-110

Baby Jelly 6/0 Pink Czech Seed Beads Crystal C/L Neon Purple 63210006-097

Baby Jelly 11/0 Pink Miyuki 11/0 Dark Orchid Gold Luster 695SB11O-1867V

Belle Cap

Turquoise Miyuki Seed Bead 11/0 Tur. Blue Opaque Matte Luster 695SB11O-2029

Aztec Gold 11/0 Miyuki Seed Bead 11/0 apx.22g Aztec Gold 695SB11O-4588V

65401645, Size 6/0 Czech Seed Bead, Wine

Two-Hole SuperDuo Beads:

White 27888170-016V and White Luster 27888170-059V

Baby Jelly Pink 27888170-049V

Belle Cap Apollo Gold 27888170-022V

10mm Fringe Discs (for Big Jellies)

8mm Fringe Disc (for Baby Jellies and Belle Cap)

You'll Also Need:

Beading Thread for Cap - Miyuki Duraline

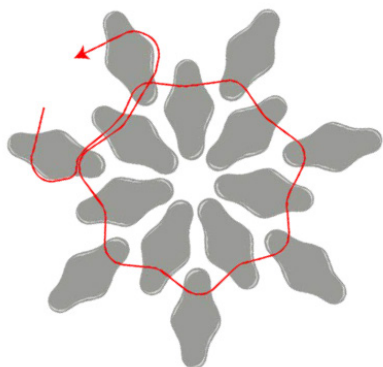
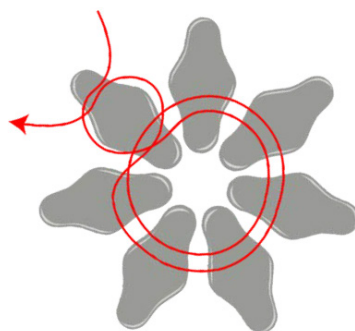
Beading Thread for Fringe - Good Thread

Size #12 Beading Needle

Steps 1 and 2 apply to all caps size and styles. At Step 3, the steps vary to make the BabyJelly, a Belle Cap, or skip to page 5 for the Big Jelly.

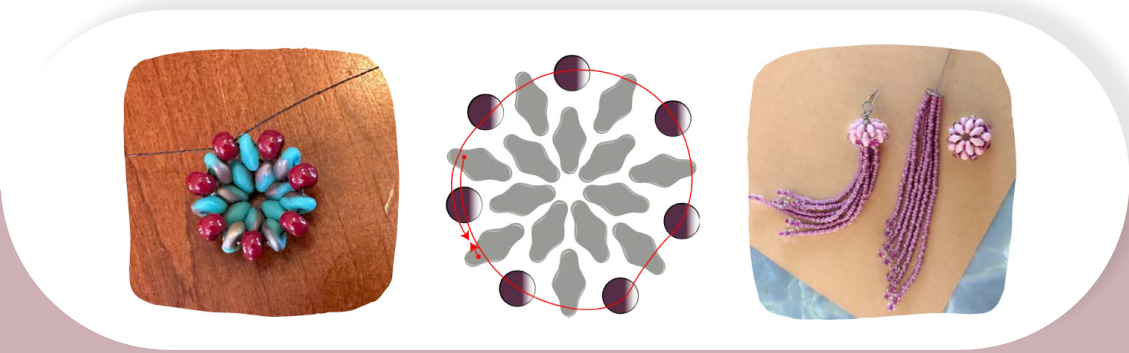
STEP 1

Cut 45 to 50 inches of Miyuki Duraline Beading Thread. String (7) SuperDuos. Go through the beads twice to form a ring. Weave the working and tail threads up through the top hole of the starting SuperDuo.



STEP 2

String (1) SuperDuo bead in between each SuperDuo. Step up the working and tail threads.

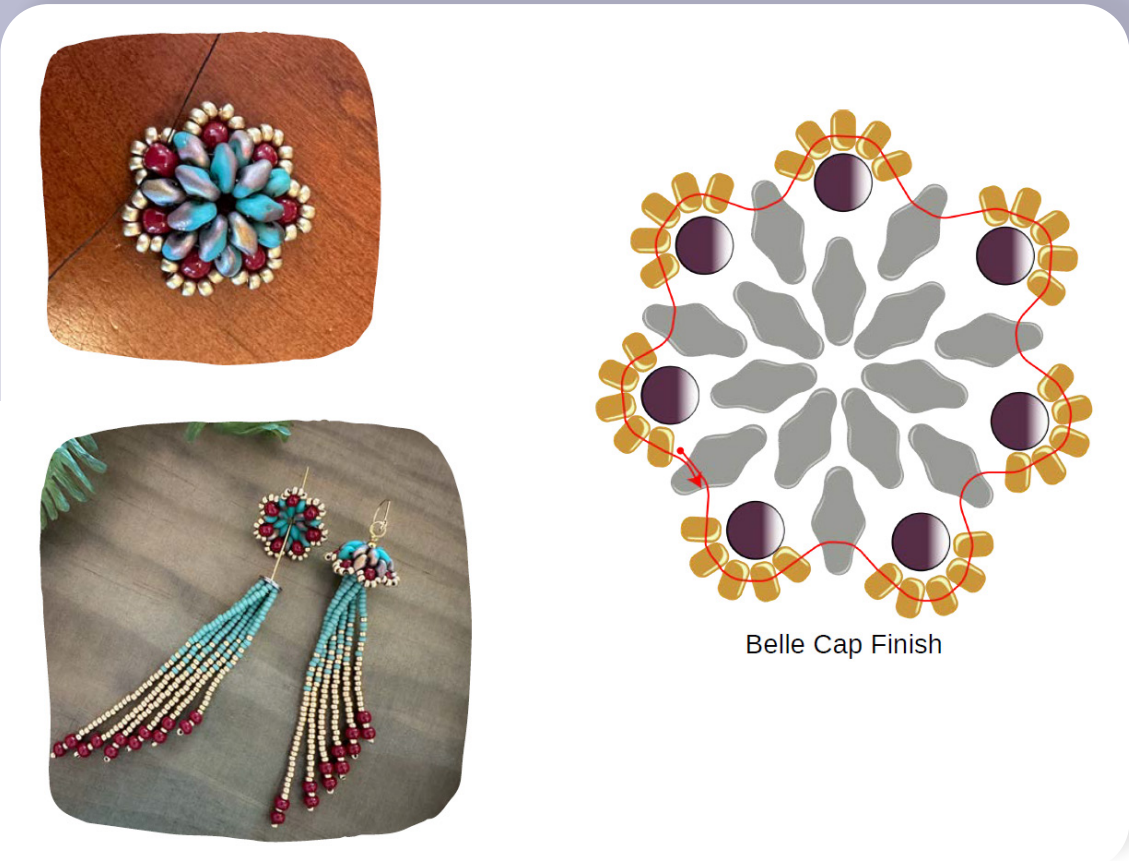


STEP 3 - Baby Jelly - Skip to next page if making Big Jelly

String (1) Size 6/0 Seed Bead in between each SuperDuo bead. Reinforce, then use the tail thread to knot. Weave in and trim. See last page for 8mm Fringe Disc Instructions.

Belle Cap Variation!

Finish this with an edge of 11/0 for a beautiful Belle Cap. String (5) 11/0 Seed Beads through each SuperDuo. The 11/0 will border the 6/0 beads. Weave in and trim. Use 8mm fringe disc with this cap.
See last page for fringe pattern.

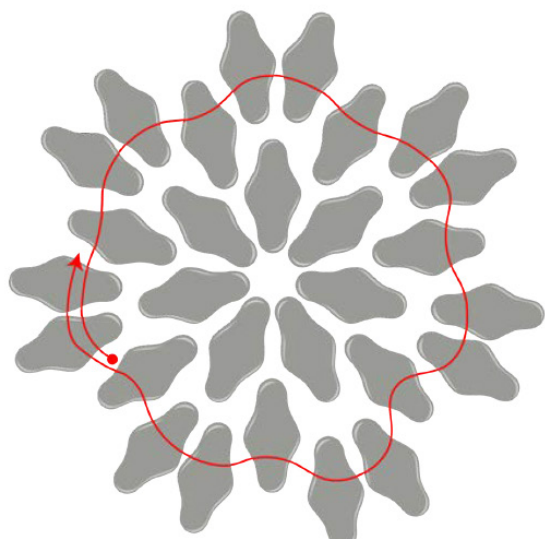


STEP 3 - Big Jelly

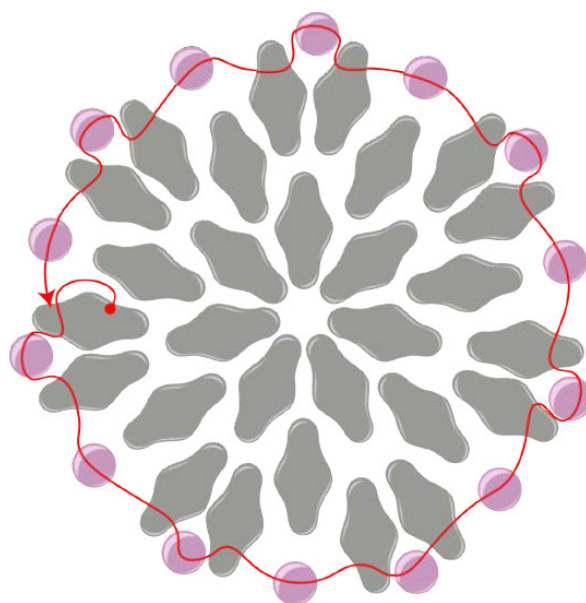
String (2) SuperDuo in between each SuperDuo. Cross over the tail thread and reinforce once around.

STEP 4

Step up to the outer hole of the SuperDuo. String (1) Size 8/0 Seed Bead in between each SuperDuo. Use tight tension.

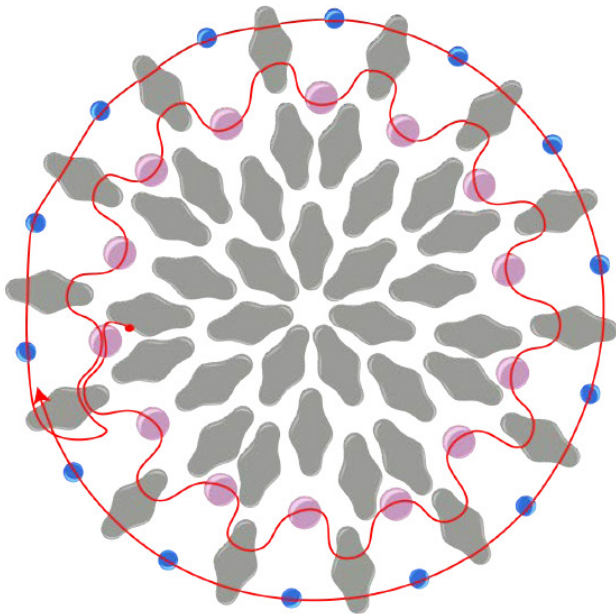


Step 3, Big Jelly



Step 4, Big Jelly





Step 5 and 6, Big Jelly



STEP 5

String (1) SuperDuo in between each 8/0 seed bead. Reinforce and maintain tight tension.

STEP 6

Step up through the starting SuperDuo. String (1) 11/0 seed bead in between each SuperDuo. Use tight tension, reinforce. Weave the tail thread up into this ring and use it to knot with the working thread. Weave in and trim. This size works with the 10mm fringe disc.

STEP 7 - Big Jelly Fringe

Cut 120 inches of beading thread for fringe, such as Good Thread in white. Bring the needle through an outer hole on the bead cap. String the fringe pattern:

[(3) 11/0, (1) 8/0] x 6 in color pink

[(3) 11/0, (1) 8/0] x 6 in color purple

(1) 11/0, (1) 6/0, (1) 11/0 in color purple

(1) 6/0, (1) 11/0 in color pink.

On every other string, add an additional:

(1) 6/0, (1) 11/0 in color purple.

Skipping the last bead, go back up through the strand of fringe. Continue through the hole on the fringe disc. Turn to go through the next hole in the disc and repeat around. Tie remaining working thread to the starting tail thread.





10mm Fringe Disc



10mm Fringe Disc

Fringe Disc for the 8mm size (below) uses the same stitch method. For each of the inspiration designs, a random pattern was used for the small jelly and a flow pattern used for the belle cap.



Belle Cap 8mm Fringe Disc



Random lengths pattern featuring 11/0 and 6/0 seed beads.

Belle Cap Fringe Pattern: (11)11/0 Color A. (1) 11/0 Color B. (2)11/0 Color A. (1)11/0 Color B. (1)11/0 Color A. (2)11/0 Color B. (1)11/0 Color A. (11)11/0 Color B. (1)6/0, (1)11/0 Color B, (1)6/0, (1)11/0 Color B.

Increase the (11) count by (2) beads with each new row, maintaining the rest of the pattern. Counts will go from 11, first strand, to 21 beads on the last strand.